

Measuring Up

A good kitchen design depends on accurate measurements. First, decide on what you need, what you want, and what you'd like to keep and incorporate in your new kitchen. Then, help organize your thoughts and make it easier for others to understand your ideas by drawing a preliminary room outline and floor plan. They don't have to be works of art, just clear overhead sketches of your new kitchen. Your designer or salesperson will double check measurements.

Tools Needed

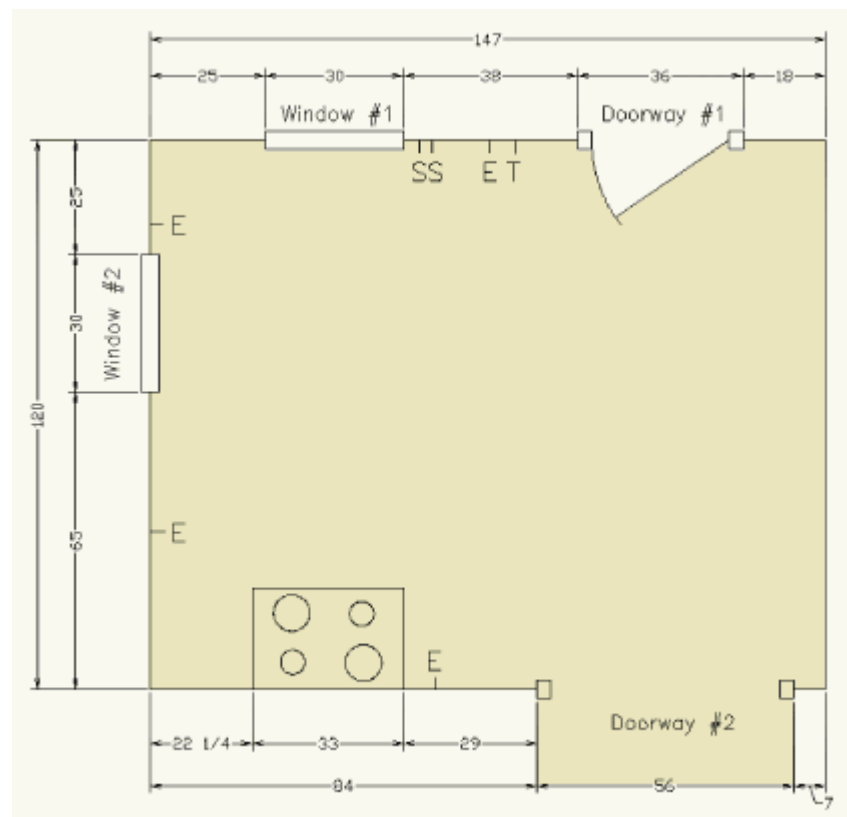
1. 25 foot metal tape measure
2. graph paper
3. pencil and pens (different colors if possible)

Some of the first things you will need to know about your room are the dimensions. If you are building, your builder or architect can provide you with a set of plans to provide you with all the information needed. If you are remodeling, measure the space carefully, create a sketch of the room. In the finished design you will show the locations of all appliances you wish to keep, plumbing, electrical outlets, light switches, windows and doors.

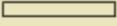
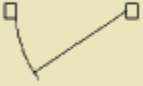
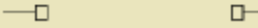
How to measure your kitchen:

NOTE: All measurements should be in inches

Here is a picture of a sample drawing:



Sketch the outline of your room on the graph paper including any windows, doors, and doorways. On doors make sure to indicate the direction the door swings. Do not worry about the measurements. We will cover that in the next step. You can use these symbols:

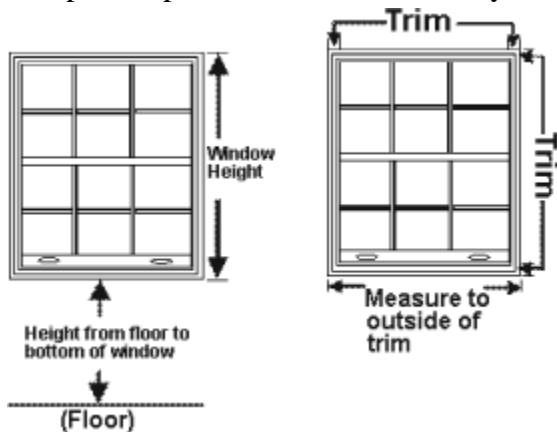
	Window	 E	Electrical Outlet
	Door	 S	Light Switch
	Doorway without Door	 T	Telephone Jack

Walls

1. Begin in one corner, select a wall and measure its length from corner to corner.
2. Write the measurement on the corresponding wall on your sketch.
3. Go to the next corner and measure the length of the next wall.
4. Repeat steps 2 and 3 until all wall measurement are complete.
5. Measure the height of the room. Write this dimension in the space provided.

Windows and Doors

1. Begin in the upper left corner of your drawing.
2. Moving clockwise, number the windows until you reach the starting point.
3. Repeat steps 1 and 2 for the doorways.
4. Measure the width of the window. See note below. Write the dimension on the drawing.
5. Measure the height of the window. See note below. White the dimension in the table on the drawing corresponding to the window number.
6. Move clockwise around the room measuring each window until you reach the starting point.
7. Repeat steps 5 and 6 for the doorways.



NOTE: The trim is considered part of the window or door. Measure from the outside of the trim on one side to the outside of the trim on the other side

Utilities

Locate any existing plumbing and measure the distance from each wall and the floor. Repeat for electrical outlets, light switches, lighting hookups, and telephone jacks.

Appliances

If you plan to keep any of your existing appliances record the dimensions of each and a location where they are to be placed.